

bodyflex

Colour Swatches



reddot design award
winner 2010

KOPLUS[®]

KOPLUS[®]
www.koplus.eu

bodyflex

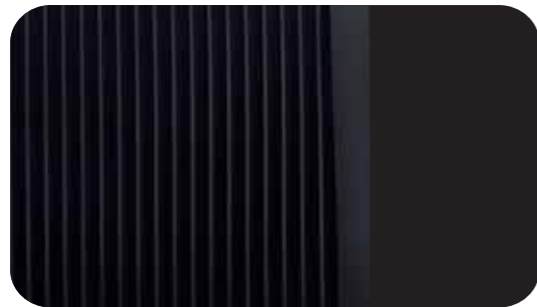
FRAME/FABRIC OPTIONS



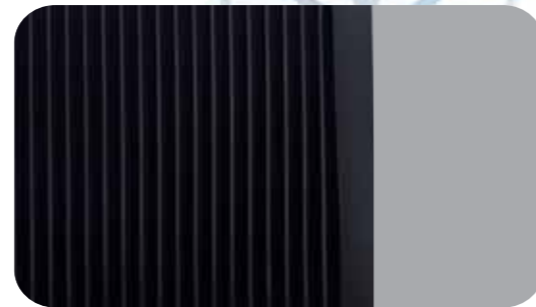
reddot design award
winner 2010



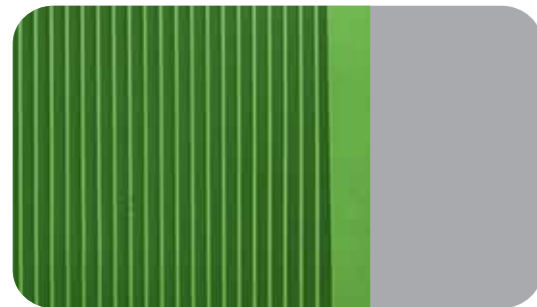
ACTIVE BACK



BLACK / BLACK



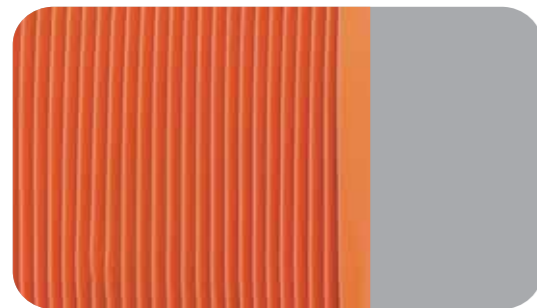
BLACK / GREY



GREEN / GREY



GREY / GREY



ORANGE / GREY

FRAME



BLACK

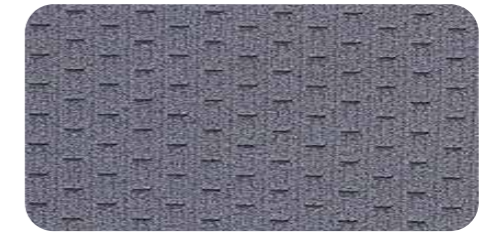


SILVER

FABRIC



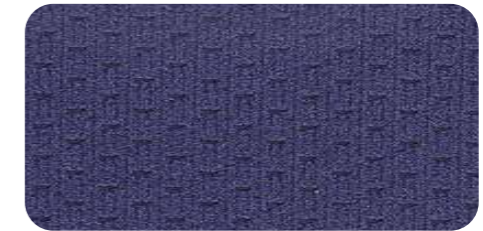
BLACK



GREY



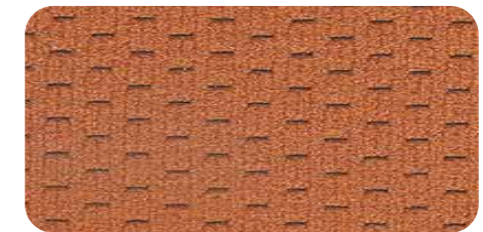
RED



BLUE



GREEN



ORANGE

BODYFLEX FABRIC SPECIFICATIONS

Content	100% polyester
Weight	0.274 kg / Meter
Surface Abrasion	80,000 rubs (BS EN ISO 12947-2:1999 - Martindale tested)
Tensile Breaking Strength	33.56 kg warp / 59.4 kg fill
Colourfastness to Light	4.5
Colourfastness to Damage	Dry Staining 4.5 / Wet Staining 4.5
Flammability	Complies with BS7176:2007 Specification for resistance to ignition of upholstered furniture for non-domestic seating by testing composites. (BS EN1021-1:2006 BS EN1021-2:2006) Complies with California Technical Bulletin 117, Section E, Part 1