

tonique

Colour Swatches



KOPLUS[®]

KOPLUS[®]
www.koplus.eu

tonique

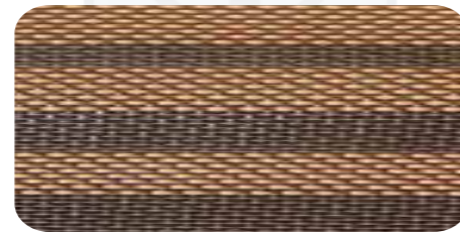
FRAME/FABRIC OPTIONS



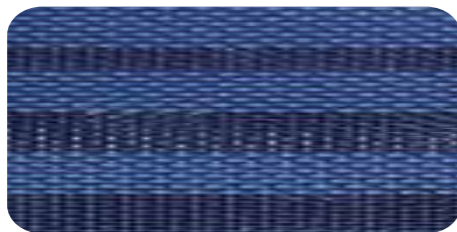
BACK MESH



BLACK



ORANGE



BLUE

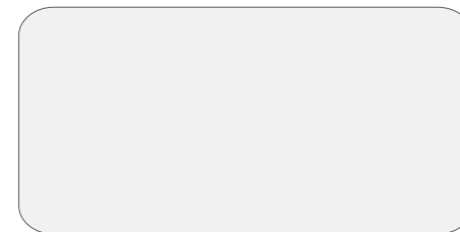


GREEN

FRAME

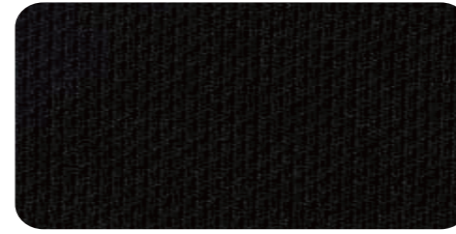


BLACK



WHITE

SEAT FABRIC



BLACK



ORANGE



BLUE



GREEN

Tonique Fabric Mesh Specifications

T0-T3 (seat fabric)	SW-T3 (seat fabric)		T0-M3 (back mesh)
	Polyester 100%	Content	TPEE X 91% + PET X 9%
	0.302 kg / Meter	Weight	0.6967 kg / Meter
	80,000 rubs	Surface Abrasion	Over 10,000 rubs
BS EN ISO 12947-2:1999 - Martindale tester			
	4.5	Colorfastness to Light	4.5
	dry staining 4.5 / wet staining 4.5	Colorfastness to Crocking	dry staining 4.5 / wet staining 4.5
	Complies with California Technical Bulletin 117, Section E, Part 1	Flammability	Complies with California Technical Bulletin 117, Section E, Part 1
Complies with BS7176:2007 Specification for resistance to ignition of upholstered furniture for non-domestic seating by testing composites. (BS EN1021-1:2006 & BS EN1021-2:2006)			